

**TECHNICAL
SPECIFICATION**



MF15H

HIGH LEVEL FEEDER

MF15H HIGH LEVEL FEEDER

OVERVIEW

Total Weight	12,500kg (27,558bs) - Standard Unit		
Transport	Length	12.16m (39' 11")	
	Height	2.55m (8' 4")	
	Width	2.29m (7' 6")	
Working @ 24°	Length	18.2m (59' 9")	
	Height	7.37m (24' 2")	
	Width	2.29m (7' 6")	
Power Unit	Tier 3: CAT 4.4 62kW (83hp) or, Stage V: CAT 2.2 55kW (74hp)		

NOTE: Dimensions may differ slightly from sales drawings due to differences in angles / reference points.

FEATURES & BENEFITS

- High capacity up to 450tph (496 US tph).
- Maximum feed size up to 150mm (6").
- Eliminates the need for wheeled loaders to create stockpiles - reduces labour and maintenance costs.
- Eliminates the need for handling material multiple times - reduces labour and maintenance costs.
- Improved material quality due to reduced compaction, degradation, segregation and contamination.
- Can except loads from an excavator, wheeled loader, crusher or screener.
- Multiple hopper options available depending on required capacities and operators loading methods or application.
- Rapid set up time and manoeuvrability around site.
- Reduced fuel consumption due to reduced reliance on wheeled loaders.
- Reduced wear on wheeled loaders where a conveyor is utilised.
- Hydraulic discharge height adjustment.
- Hydraulic fold over for transport.
- Rosta scraper.
- Discharge conveyor head drum bearing automatic greasing.
- External conveyor belt adjustment.
- Engine pre-start delay & siren.
- Emergency stops x 3.



MF15H HIGH LEVEL FEEDER

HOPPER & GRID

Grip Opening:	3855mm (12' 8") x 1995mm (6' 7")
Target Area (Without Grid):	3468mm (11' 5") x 1438mm (4' 9")
Grid Apertures:	108mm (4")
Optional Grid Apertures:	100mm (4"), 126mm (5"), 151mm (6")
Capacity (Tipping Grid Fitted):	3.8m³ (4.97 Cu.Yd.)
Capacity (No Tipping Grid Fitted):	4.2m³ (5.5 Cu.Yd.)
Rear Feed In Height Without Tipping Grid:	2.28m (7' 6")
Rear Feed In Height With Tipping Grid:	2.76m (9' 1")

FEED CONVEYOR

Width:	1050mm (42")
Belt Type:	Plain
Belt Spec:	EP400/3 4+2
Variable Speed:	Yes

DISCHARGE CONVEYOR

Width:	1050mm (42")
Belt Centres:	15.6m (51' 2")
Belt Type:	Plain
Belt Spec:	EP400 3 4+2
Drive Drum Dia:	286mm (11.3")
Tail Drum Dia:	270mm (10.6")
Max Belt Speed:	109m/m
Motor Size:	500cc
Operating Angle:	0° - 24°
Discharge Height @18°:	5.9m (19' 4")
Stockpile Capacity @18° & 37° Angle of Repose:	290m³ (379 Cu.Yd)
Discharge Height @24°:	7.2m (23' 8")
Stockpile Capacity @24° & 37° Angle of Repose:	583m³ (762 Cu.Yd)
Variable Speed:	Yes

TRACKS

Shoe Width:	300mm (1')
Sprocket Centre:	3434mm (11' 3")
Outer Width:	2292mm (7' 6")
Gradability:	39.2°
Speed:	0.8km/h
Speed High:	1.5km/h
Speed High:	63Lpm (Per track)



POWER UNIT & HYDRAULICS

Engine (Tier 3):	CAT C4.4
Power Rating:	62kW (83hp)
RPM:	2300rpm
Crankshaft Pump:	29/29/19

Engine (Stage V):	CAT C2.2
Power Rating:	55kW (74hp)
RPM:	2300rpm
Crankshaft Pump:	29/29/19

Diesel Tank Capacity:	145L (38 US GAL)
Hydraulic Tank Capacity:	300L (79 US GAL)

NOTE: Stage V engine option is Dual Certified to include the USA

SINGLE DECK VIBRATING GRID

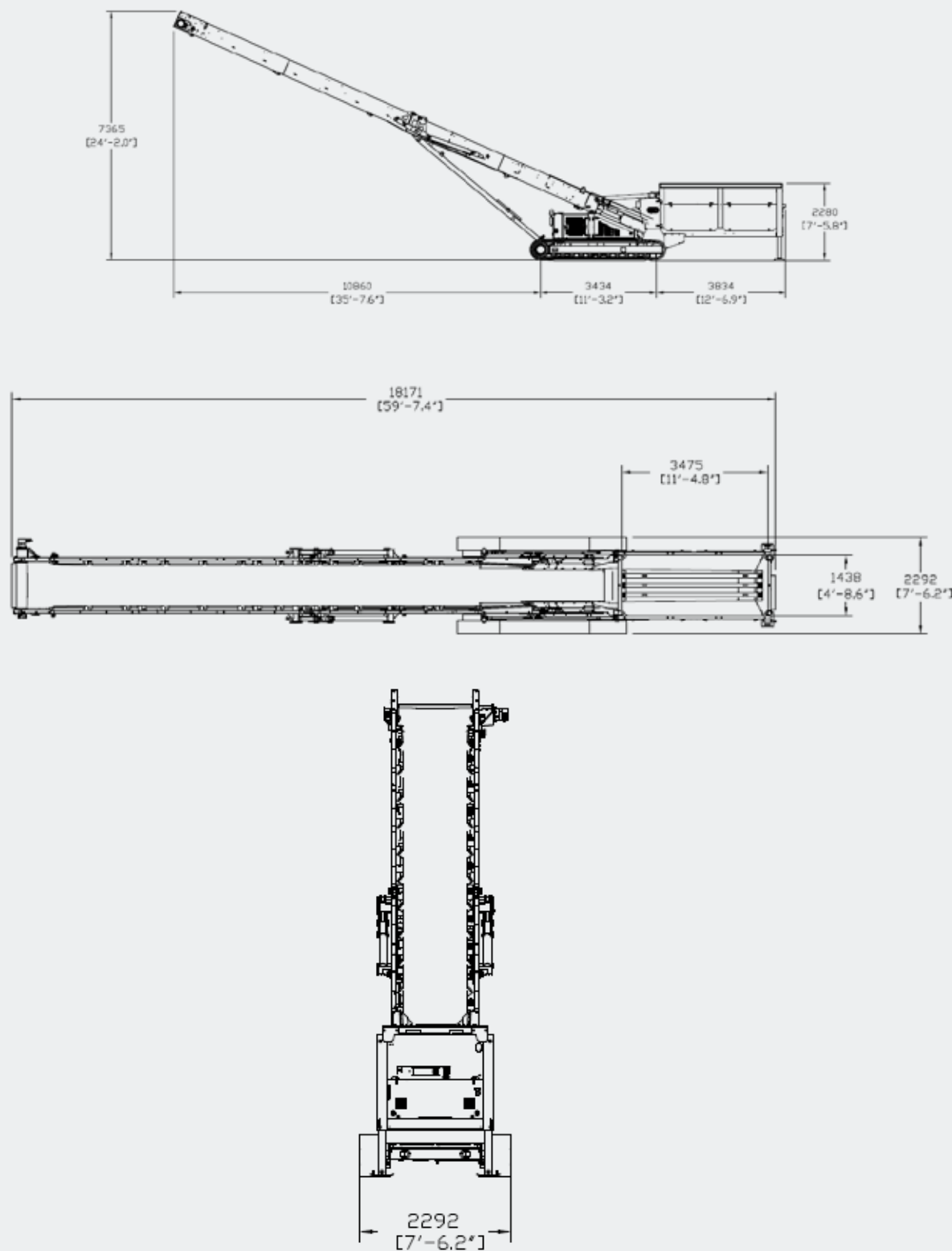
Type of Grid:	3.1m x 2.45m (10' 2" x 8') Single Deck Vibrating Grid
Target Area:	3.84m x 2.1m (12' 7" x 6' 11")
Grid Opening:	3.03m x 2.17m (9' 11" x 7' 1")
Top Deck Type:	Tapered Bofor Bar
Standard Aperture:	90mm tapering to 110mm (4")
Optional Apertures:	110mm - 130mm (5")
Working Angle:	4° - 14°
Tip Angle:	43°
Rear Feed In Height:	3483mm (11' 5") @ 12° / 3560mm (13' 7") @ 14°
Weight:	5450kg (12,015lbs)
Speed:	1050rpm
Throw:	4.5mm
G Force:	2.77G
Increase In Transport Height:	+820mm (2' 8")

OPTIONS

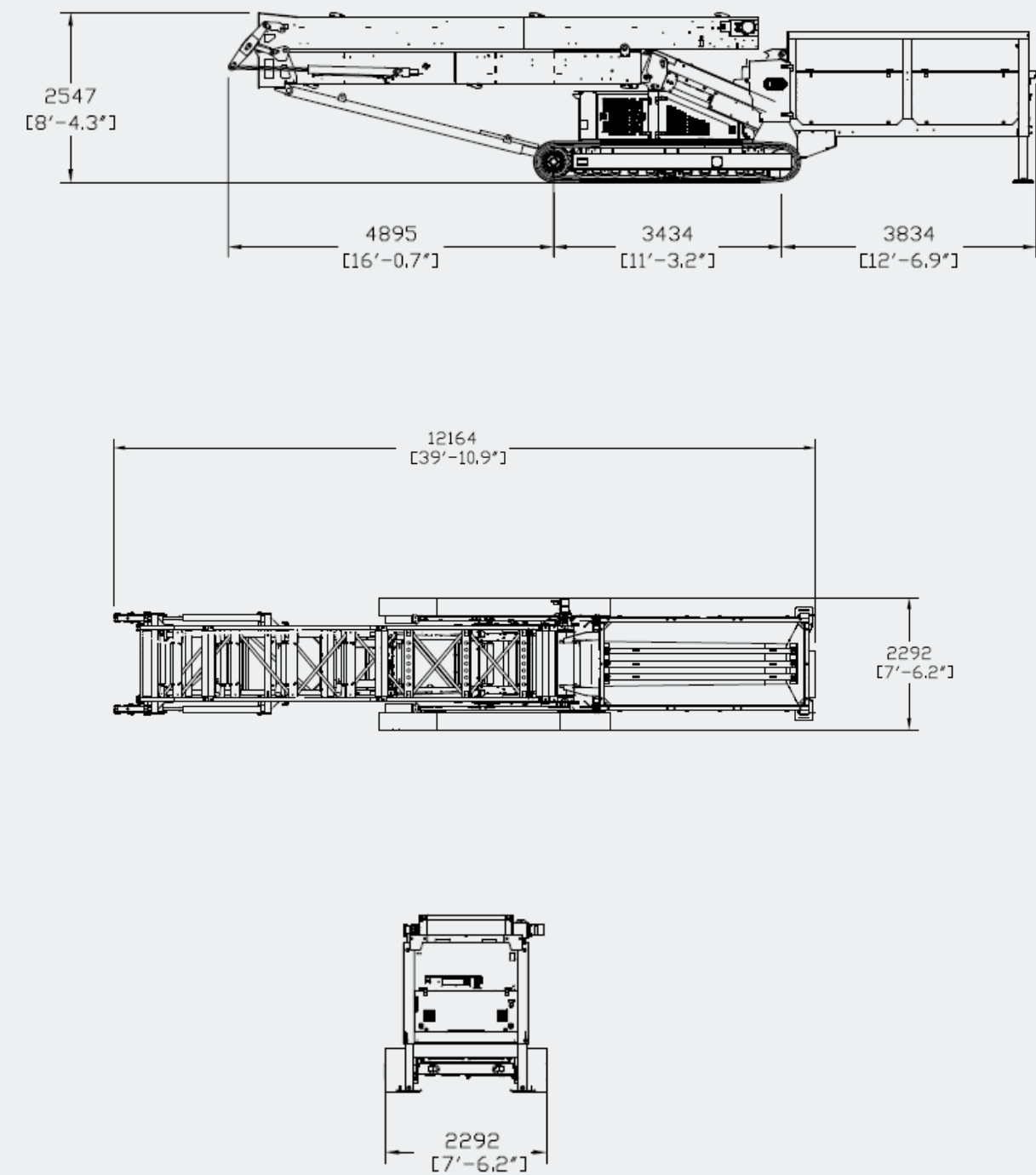
- Dust hood.
- Canvas dust covers complete with dust hood on discharge conveyor.
- Full length skirting rubber along discharge conveyor.
- High spec head drum scraper on discharge conveyor (plain belt only).
- Anti-roll back flaps.
- Heavy duty plain discharge belt EP500 3 Ply x 5 + 2 covers.
- Discharge conveyor under guard for mid-section.
- Spray bar at head drum.
- Belt weigher.
- Overband magnet on discharge conveyor complete with hydraulic kit and support frames.
- Radio remote to start / stop feeder, start / stop discharge conveyor and tracking.
- Radio remote to raise / lower discharge conveyor & tipping grid.
- Pull cord E-Stop running the length of the conveyor.
- 12ft tipping grid 4", 5" or 6" grid cassette
- 500mm (20") hopper extensions with fall break system in hopper.
- 700mm (28") hopper extensions with fall break system in hopper.
- Machine prepped hydraulically to tip a grid including remote control (no grid supplied).
- Machine prepped hydraulically for SDVG including remote control (no SDVG supplied).
- Discharge conveyor chevron belt EP315 3 ply 3 + 1.5 covers.
- Grade ISO 68 hydraulic oil (recommended for ambient temperatures between +15 and +50 degrees Celsius).
- Grease lines to head drum.

MF15H HIGH LEVEL FEEDER

WORKING DIMENSIONS



TRANSPORT DIMENSIONS





FUCHS®
A TEREX BRAND

WORKS FOR YOU.™

www.terex-fuchs.com

August 2021. Product specifications and prices are subject to change without notice or obligation. The photographs and/or drawings in this document are for illustrative purposes only. Refer to the appropriate Operator's Manual for instructions on the proper use of this equipment. Failure to follow the appropriate Operator's Manual when using our equipment or to otherwise act irresponsibly may result in serious injury or death. The only warranty applicable to our equipment is the standard written warranty applicable to the particular product and sale and Terex makes no other warranty, express or implied.
© Terex Corporation 2021. Terex, the Terex Crown design, Fuchs and Works For You are trademarks of Terex Corporation or its subsidiaries.

Terex Deutschland GmbH | Industriestraße 3 | 76669 Bad Schönborn | Germany | Phone: +49 (0) 7253 84-0 | Fax: +49 (0) 7253 84-102 | Email: info.terex-fuchs@terex.com